

A.

SCOPE

1.

The location of plants, as shown on the plans, is approximate. The final locations may be adjusted slightly to accommodate unforeseen field conditions, to comply with safety setback criteria, to avoid creating unsafe sight conditions, or as otherwise directed or approved by the Landscape Architect / owner in writing. All other location adjustments to the layout are to be approved in advance in writing by the Landscape Architect and owner.  
Contractor understands that an important element of the design of this project is meeting landscape ordinances with a design flare that includes symmetry, alignment, focal points and / or smooth curvilinear forms where applied and contractor shall follow and instruct the working crews accordingly. In the event of any doubt as to how to execute the plans, Contractor shall immediately consult with Archtict and/or Owner.  
Landscape Contractor shall fine grade, prepare site as outlined in the following notes and per plans; furnish and install all plants, shrubs, trees and / or palms meeting minimum requirements and brace them per details provided. Furnish and install soil, gravel, boulders, sod and mulch as specified in plans and notes below.  
Landscape contractor shall furnish and install all trees, palms, shrubs, groundcover, sod, planting soil, fertilizer, herbicide, pre-emergence herbicide, seed, and mulch.

B.

BIDDING

1.

Contractor to have liability insurance including Owner and Landscaper as insured's in excess of \$10,000 as well as Worker's Compensation.  
Contractors and Subs must ensure they are doing take offs from Bldg Dept.. Revised sets and / or Bid Set documents. Verify with this Office that you are bidding from latest available plans.  
Read ALL notes and typical planting details sheets prior to submitting RFIs and prior to bidding.  
When submitting an RFI reference sheet number, detail number and/or note category and number.  
Landscape contractor shall verify all estimated quantities of material shown on the drawings prior to submitting their bid. Plant pricing (if shown) is for permitting / mitigation comparison purposes only, any prices shown are to be disregarded by Landscape Contractor.  
All Plant Material shall meet or exceed height and spread requirement. Heights are local code requirement and / or design intent related and always governs over container size. Container size given for reference only and must be sized-up to meet height requirements of plant list. Plant material available with excessive height beyond specifications must be consulted with Landscape Architect for design intent.  
All landscape materials conforming to be available at time of design. Landscape contractor understands that some material may not be available locally, however is available in Trn-County Region. Plant material supply is the responsibility of the Landscape Contractor that is awarded the contract and he/she shall take steps to ensure availability at the time of installation. Bring to the attention of Landscape Architect if specific material is no longer available at the time of bidding and / prior to actual construction. Substitutions must be approved prior to construction.  
Pre-inspections of site required prior to bidding.  
The plant list is intended only as an aid to bidding. Any discrepancies found between the quantities on the plan and the quantities on the plant list shall be brought to the attention of the Landscape Architect for clarification.  
All labor and material for soil amendments and fertilizer that is required to ensure the successful establishment and survival of the proposed vegetation, as well as all the cost for the removal of unsuitable or excess backfill material from plant beds, in addition to tie grading and mulching all plant beds and individual trees shall be included in the contractor's bid to perform the work represented in this plan set.  
Bid shall be itemized for possible value engineering.  
Sod and Rocks (if specified) shall be estimated by scaling plans. Include price per square foot for sod. Rocks (include price per ton). Small rocks and gravel beds shall have landscape fabric material and minimum 4" depth. Boulders to be bid by unit.  
All plants noted as approximate and shall not be considered all inclusive; it is the contractor's responsibility to do his or her take off, submit price per S.F. and in the end, sod all areas that are not covered either by plants, mulch and/or rocks. It shall be the responsibility of the contractor to include in the bid, the repair of any existing sod which may be damaged during construction.  
Final payment to the Contractor shall be for actual plants installed on the project.  
Contractor shall be responsible for obtaining and paying for costs of all permits described in bid whether permit costs are reimbursable by owner or included in bid. Research permit status and research all fees and additional documentation and certifications required such as separate tree removal permit for example, and consider prior to bidding.  
General / Landscape Contractor shall leave a 5% unforeseen conditions allowance such as for additional root barriers determined to be needed on site and as job progresses.  
Refer to Section T, Watering, for supplemental watering requirement.  
Landscape contractor is responsible for verifying all plant quantities prior to bidding and within 7 calendar days of receipt of these plans shall notify the landscape architect in writing of any and all discrepancies. In case of discrepancies, planting plans shall take precedence over plant list. No substitutions are to be made without prior consent of the Landscape Architect.

C.

GENERAL LANDSCAPE NOTES

1.

Plants grown in containers prior to installation shall be removed from their containers before they are planted in the ground and have circling roots removed. All screening shrubs shall be planted for proper operation of equipment being screened and/or per the requirements of the utility as necessary. All hedge material required for screening purposes shall be planted with branches touching. Adjust spacing as necessary and/or provide screening plants to provide an adequate screen as required by code. Leave access to utility or clearance as required.  
All landscaping shall be installed according to sound nursery practices. Contractor shall comply with federal, state and local laws and regulations pertaining to the inspection for plant disease and insect infestation.  
All ideas, designs and plans indicated or represented by this drawing are owned by and are the exclusive property of Keith and Associates and may not be duplicated without authorization or used for other projects than those intended.  
The Landscape Contractor shall exercise caution to protect any existing sod, electrical and irrigation. Any damage to the sod, electrical or irrigation shall be replaced or repaired to the original state by the Landscape Contractor at no additional cost to the owner.  
Tree, palm, accent shrubs and bed lines are to be located in the field and approved by the Landscape Architect / owner prior to planting. Landscape Contractor acknowledges that material planted without approval of location may be subject to rejection by Landscape Architect to maintain design intent if it follows poorly.  
All trees must be pruned as per Landscape Architect's direction.  
In areas where asphalt is removed in order to receive landscape material, the lime rock sub-base material must also be removed and replaced with approved planting soil mix.  
Landscape contractor is responsible for sending photographs to the landscape architect to pre-approve all trees, palms, and shrubs prior to delivery to project site.  
Landscape contractor shall coordinate his or her work with that of the irrigation, landscape lighting, and hardscape contractor if different.  
The landscape contractor shall treat plant areas with pre-emergence herbicide after weeds and grass have been removed. Landscape contractor shall wait 7 days after pre-emergence treatment prior to planting.

D.

PERMITS & REGULATIONS

1.

Contractor(s) must obtain separate landscape, irrigation and tree relocation/removal permits from the governing authority prior to the issuance of the first building permit for tree relocation.  
Landscape contractor to call the Landscape Inspector to schedule a pre-construction meeting prior to installation if required.  
All mandatory requirements by local Landscape Departments and their inspectors shall govern and landscape contractor commits by accepting contract to comply promptly for builder/owner to obtain C.O.

E.

TREE REMOVAL

1.

Removal of any trees or palms will require a written "tree removal permit" from the local governing agency prior to removal. Non-native trees classified as "prohibited" trees may be exempt from the permit if listed as Category 1 by Florida Exotic Pest Plant Council. Confirm with Local Municipality.  
Landscape Contractor is responsible to remove ALL invasive nuisance trees such as Brazilian Pepper, Melaleuca, Australian Pine and all invasive trees as categorized by the governing agencies, whether listed on plans or not.  
The Landscape Contractor is responsible for coordinating tree and palm removals and transplants shown on the tree/palm Disposition Plan. The Landscape Contractor is to remove and discard from site existing unwanted trees, palms, shrubs, ground covers, sod and weeds within landscape areas.

F.

EXISTING TREES

1.

Existing trees designated to remain shall be protected during all construction phases. Any trees or shrubs designated to remain that are scarred or destroyed will be replaced at the contractor's expense, per the appraised value.  
Existing plant material not shown on the plan and in conflict with new planting shall be evaluated at the time of new planting installation by the Landscape Architect. Trees and plant material indicated to be relocated with no new location provided in plans shall be moved to a location on site designated as a nursery holding area with the root ball protected from direct sunlight, maintained and irrigated until new location is determined.  
Prune trees to remove damaged branches and improve natural shape and thin out structure. Do not remove more than 15% of branches. Do not prune back terminal leader.  
Prune existing shrubs to remove damaged branches and improve natural shape.  
Existing trees to remain shall be trimmed per ANSI-A300 standards. Supervision of the trimming shall be performed by an ISA Certified Arborist to ensure quality work.  
All existing trees shall be "lifted and thinned" to provide an 8' minimum clearance for sidewalks and pedestrian walkways and a 14' minimum clearance for roadways, driveways and all vehicular use areas.  
Selective canopy and root pruning of existing trees can be conducted (only as necessary and in no event more than 35%) to accommodate for new approved construction. Pruning shall be conducted / supervised by an ISA Arborist.  
If plans call for relocation of trees, palms or plants. High level of care should be exercised to assure that they are not damaged in the process and that they are promptly replanted upon being dug up.  
All underground utilities and drain or irrigation lines shall be routed outside the tree protection zone. If lines must

G.

TREE RELOCATION (These notes for relocation trees only and if applicable)

1.

Flag all trees and palms to be transplanted with differentiating color than those to be saved or removed.  
Tree Relocation process must be performed or supervised by ISA Certified Arborist.  
Water the root zones to field capacity for 5 continuous days before root pruning. At a minimum soak the soil to a 4'-0" depth within a 6' radius.  
Root prune a minimum of six weeks before relocation. Prune away all dead or damaged limbs or fronds. For trees, prune out 1/3 of the existing canopy by selectively trimming small internal branches. For palms, gather fronds above the bud and tie them loosely with jute twine to avoid damage.  
Brace root pruned trees awaiting relocation.  
Root prune ¼rd of the root system, irrigate daily for 2 weeks then root prune another ¼ rd, irrigate daily and prune last ¼ rd on actual relocation date, no less than two weeks (six weeks total minimum root pruning by stages). ISA Arborist on staff shall observe for intense shock. Canopy pruning may be deemed necessary by Arborist on staff to balance for intense root ball loss, canopy shall be trimmed only as necessary to increase survival.  
Root prune with proper clean equipment to sever roots. Ensure roots are not torn or pulled apart.  
With hand tools, dig a 2'-0" wide by 3'-0" deep trench at a minimum distance as determined by the consulting arborist to expose roots. Cut all roots 1.5" and larger in diameter with a clean, sharp pruning saw. Treat all cuts with a fungicidal barrier. Backfill the trench, within 4 hours of digging, with a 1:1 mixture of site soil and sawdust or other fine organic material. Do not compact.  
Form a rootball size in compliance with Florida grades and Florida standards number 1 or better.  
Maintain the soil moisture at field capacity throughout the six weeks.  
Allow the plant to regenerate roots over a period of six weeks.  
At the end of six weeks, prepare the planting pit at the new location. Overdig the hole diameter a minimum of 2' beyond the root ball, with the recipient hole to be at least 1/3 larger than the area that was trenched for transplanting.  
With the consulting arborist present, undercut the entire root ball of the plants to be transplanted at a depth specified by the arborist. The undercutting method may be a choker cable drawn through the root ball with heavy equipment.  
At the direction of a professional rigger, assemble slings, padding, guiding ropes and cables for attachment to the crane or backhoe. The professional rigger shall determine the size of machinery necessary to execute the lifting and moving operation.  
Install trees within 24 hours of removal from their original location to locations provided by Landscape Architect or Developer with approval of municipal / Landscape Inspector.  
Experienced Tree Spade operator shall move tree or experienced tree mover shall choose best means and methods to strap and rig tree for transporting safely without damage to new location.  
Maintain trees in a healthy and vigorous condition during installation and throughout the plant establishment period. Replace trees that do not meet this requirement with the same species, size, and quality or per mitigation requirements specific to the governing authority with jurisdiction.  
Fertilize the plant as directed by the consulting arborist.  
When the plant is placed in the new location, backfill the planting pit with topsoil and water thoroughly to eliminate air pockets and compact the soil. Set the tree no deeper than its original condition.  
Cover the root ball area with 3" depth of organic mulch.  
Provide fungicide and fertility applications at the direction of the consulting arborist.  
Post transplant watering to provide moisture and reduce any excessive stress due to root desiccation. Watering to be adjusted according to conditions and at the supervision and direction of the ISA certified arborist.  
The diameter of the root-pruning or transplanting circle shall be at a distance away from the trunk equal to 12 times each inch of trunk diameter at breast height.  
For all palms except Sabal palmetto, the lower fronds shall be pruned leaving 9-11 fronds that can be tied without an extensive amount of weight that may damage the heart of the palm. The Sabal palmetto shall have all fronds cut without damaging the bud.  
Transplanting must occur within 24 hours after being dug for relocation. Trees/palms should be kept in shade and the canopy kept moist.  
Digging and preparation of the new hole for the transplant shall be done prior to removing the tree from the existing location.  
The landscape Contractor is to verify that all new holes have appropriate percolation.  
Padding the sling may be necessary so that the trunk or "boots" are not damaged.  
A 6" saucer shall be created around the edge of the plant pit to help hold water, see planting detail for additional information.  
Over the guarantee period the Landscape contractor shall be responsible for resetting any trees or palms that are not vertical when caused by winds less than 74 mph.  
After transplanting trees and palms, the landscape contractor shall be responsible for obtaining water and watering to maintain soil moisture during the guarantee period at a minimum of: First month- daily, Second month - three times per week, Third and Fourth months - two times per week, Last eight months - one time per week.  
For trees over 4" in caliper at the time of planting, the schedule should be: First six weeks, daily, one and a half months to six months - three times per week, last six months - one time per week.

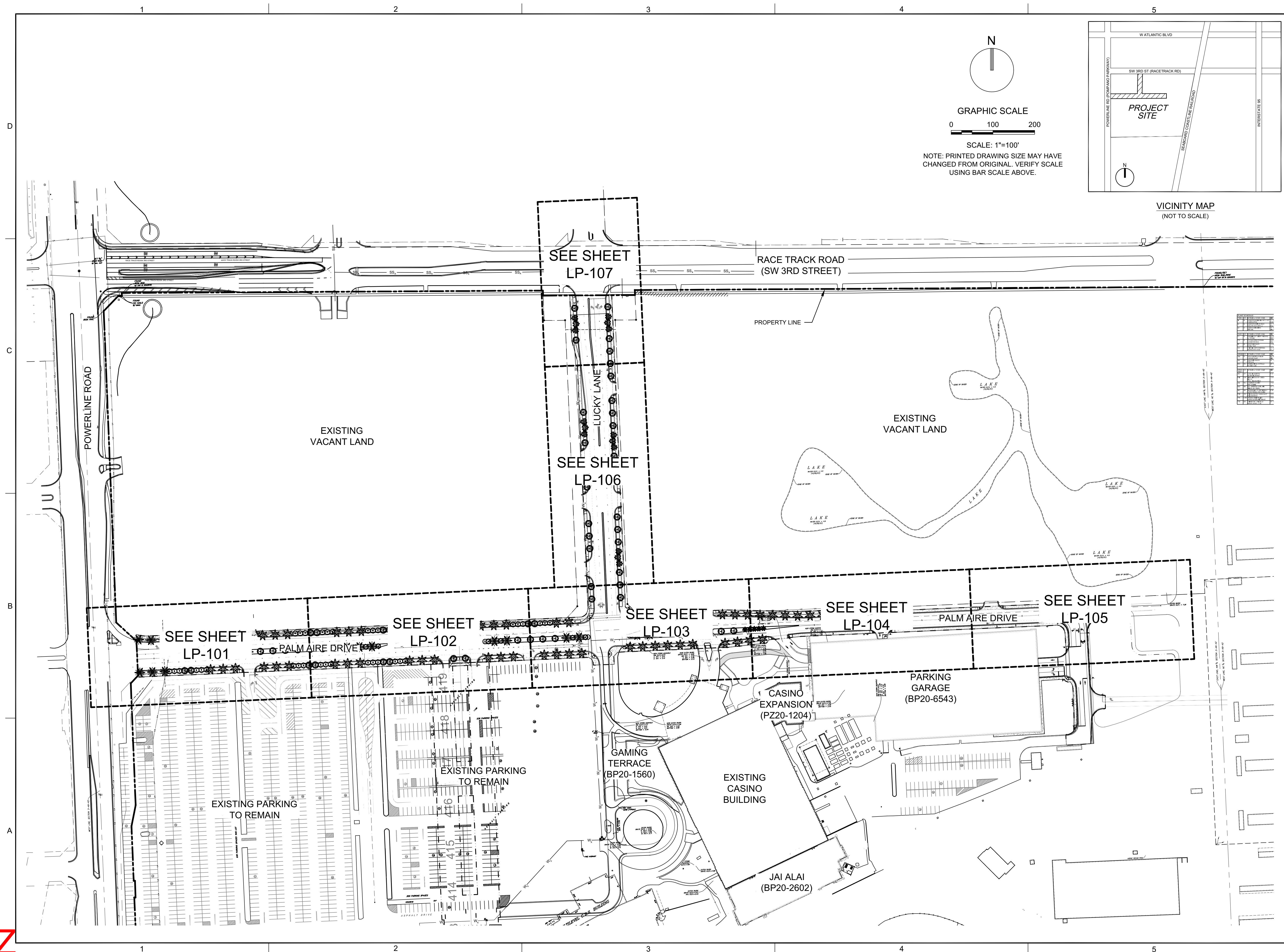
H.

SITE PREPARATION & GRADING

1.

Landscape contractor shall loosen and till compacted soils that are overly compacted in all planting areas of the project to provide for proper soil aeration for plant establishment.  
Planting areas shall be cleared of underground roots, construction debris and other materials detrimental to the health of the plants. Lime rock base material shall be removed within planting pits and adjacent to pavement. The planting areas should be clean to a depth equal to the root ball of the trees/palms proposed for the area. Planting area soils shall be tested for ph before planting. Soils showing high (alkaline) pH (over 7.5) shall be amended or replaced with native soil having a pH range of 6.5 - 7.5, as approved by Landscape Architect.  
All planting areas and planting pits shall be tested for sufficient percolation prior to final planting and irrigation installation to ensure proper drainage. Plant beds in parking lots and in areas compacted by heavy equipment shall be de-compacted so that drainage is not impeded.  
Landscape Contractor shall treat plant areas with pre-emergence herbicide after weeds and grass have been removed. Landscape Contractor shall wait (7) seven days after pre-emergence treatment prior to planting.  
Site preparation shall include the eradication and removal of any weeds, clean-up of any dead material, debris, and rubbish.  
General site and berm grading to +/- 1 inch ("1") shall be provided by the general contractor. All finished site grading shall be provided by the Landscape Contractor. All planting beds shall be free of all rocks 1/2" or larger, sticks, and objectionable material including weeds and weed seeds. All lime rock shall be removed/cleaned down to the native soils.  
The Landscape contractor shall ensure the planting areas are at finish grade prior to installing plant materials.  
All trees and plant material to remain shall be protected during construction. Contractor shall install protective barriers such as "Tenax" orange safety fencing or similar, to be installed before the beginning of the project. Barriers shall be located to include the drip line of the trees, palms and plant material. The contractor shall take extra caution to prevent any damage to the trunk,





**301 East Atlantic Blvd. Pompano  
Beach, FL 33060  
PH: (954) 788-3400**

**Florida Certificate of Authorization: 7928**  
**Licensed Business Number: 6860**

[illegible]

**PRELIMINARY PLAN**  
**NOT FOR CONSTRUCTION**

**THESE PLANS ARE NOT FULLY PERMITTED  
AND ARE SUBJECT TO REVISIONS MADE  
DURING THE PERMITTING PROCESS.**

RESPONSIBILITY FOR THE USE OF THESE  
LANDS PRIOR TO OBTAINING PERMITS FROM  
ALL AGENCIES HAVING JURISDICTION OVER  
THE PROJECT WILL FALL SOLELY UPON THE  
USER.

ISSUE DATE:	05/12/21
-------------	----------

DESIGNED BY: PW, MP, KS

**DRAWN BY:** SL, BJ

CHECKED BY: PW, MP, KS

**PRE-CONTRACT:**

PAUL H. WEINBERG, R.L.A.  
FLORIDA REG. NO. LA6666804  
(FOR THE FIRM)

**CLIENT**

**POMPANO PARK  
V LAND HOLDINGS,  
LLC**

PROJECT

Live!

## RESORTS POMPANO PHASE 1A ROADWAYS

**SHEET TITLE**

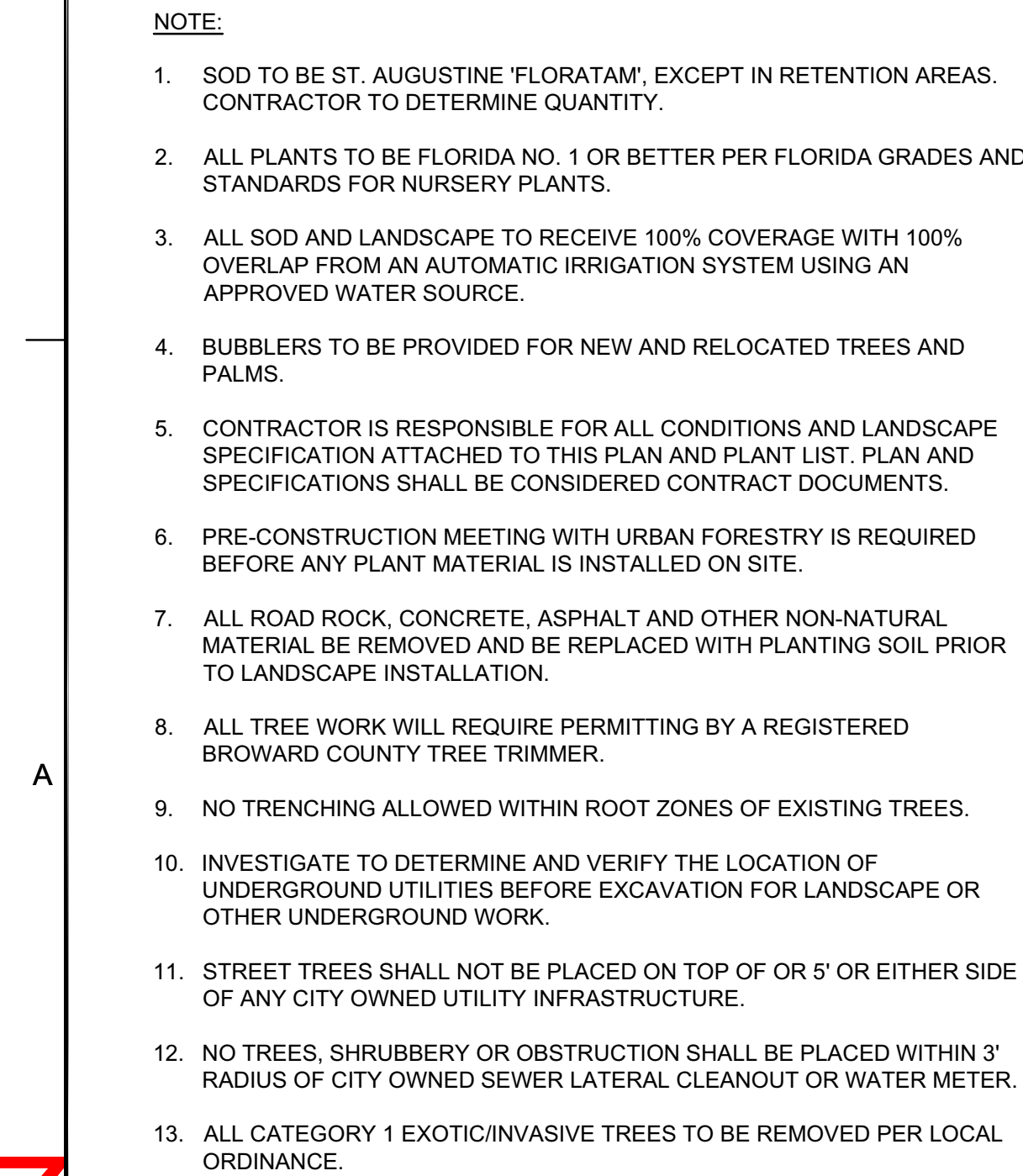
## OVERALL LANDSCAPE KEY PLAN

SHEET  
NUMBER

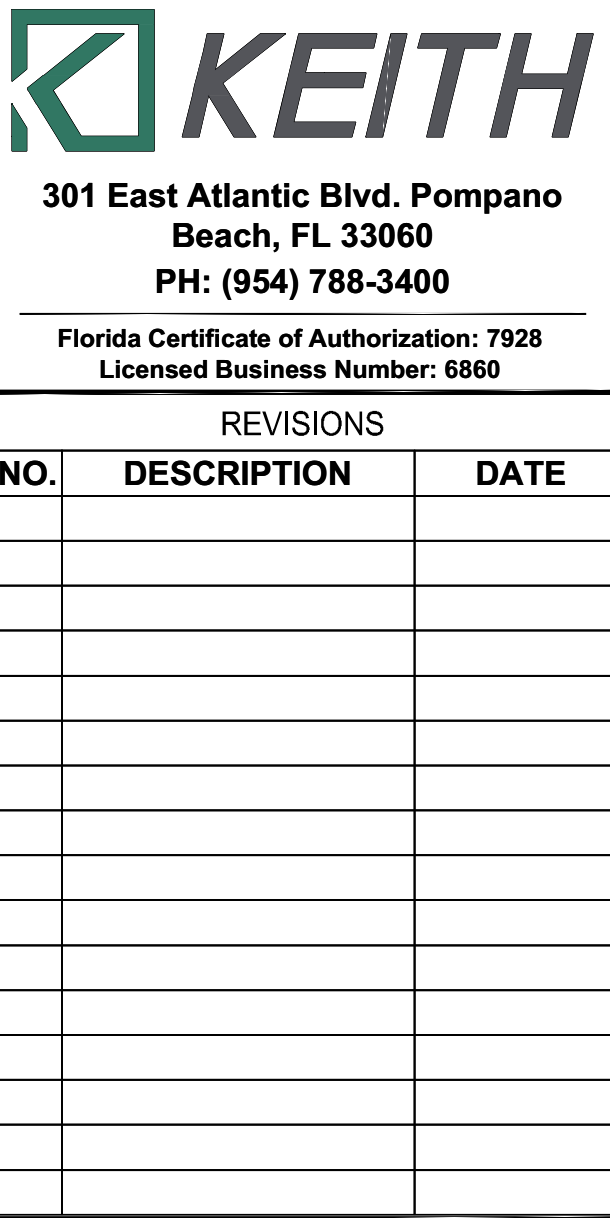
LP-100

PROJECT NUMBER	10230.09
----------------	----------





SHRUB AREAS	QTY	BOTANICAL / COMMON NAME	SIZE	NATIVE	SPACING
ARA	277	ARACHIS GLABRATA PERENNIAL PEANUT	4" HT X 12" SPRD	*	12" OC
FGI	1,341	FICUS MIROCARPA 'GREEN ISLAND' GREEN ISLAND FICUS	12" HT X 16" SPRD	N**	18" O.C., FULL SHRUB
JAS	705	JASMINUM VOLUBILE WAX JASMINE	12" HT X 16" SPRD	*	18" O.C., FULL SHRUB
MUC	699	MUHLENBERGIA CAPILLARIS PINK MUHLY GRASS	24" HT X 20" SPRD	N**	24" OC
NEO	626	NEOREGELIA X 'SUPER FIREBALL' SUPER FIREBALL BROMELIAD	6" HT X 8" SPRD; 1 GAL	**	12" OC
PBM	730	PHILODENDRON X 'BURLE MARX' PHILODENDRON	16" HT X 16" SPRD	*	18" O.C., FULL SHRUB
TRA	1,244	TRADESCANTIA PALLIDA PURPLE QUEEN SPIDERWORT	10" HT X 16" SPRD	**	12" OC, FULL SHRUB
TRD	250	TRIPSACUM FLORIDANUM DWARF FAKAHATCHEE	24" HT X 24" SPRD	N**	30" OC, FULL SHRUB



**PRELIMINARY PLAN  
NOT FOR CONSTRUCTION**

THESE PLANS ARE NOT FULLY PERMITTED  
AND ARE SUBJECT TO REVISIONS MADE  
DURING THE PERMITTING PROCESS.

RESPONSIBILITY FOR THE USE OF THESE  
PLANS PRIOR TO OBTAINING PERMITS FROM  
ALL AGENCIES HAVING JURISDICTION OVER  
THE PROJECT WILL FALL SOLELY UPON THE  
USER.

---

<b>ISSUE DATE:</b>	<b>05/12/21</b>
<b>DESIGNED BY:</b>	<b>PW, MP, KS</b>
<b>DRAWN BY:</b>	<b>SL, BJ</b>
<b>CHECKED BY:</b>	<b>PW, MP, KS</b>
<b>BID-CONTRACT:</b>	

**PAUL H. WEINBERG, R.L.A.**  
**FLORIDA REG. NO. LA6666804**  
**(FOR THE FIRM)**

**CLIENT**

**POMPANO PARK  
JV LAND HOLDINGS,  
LLC**

## PROJECT

**Live!**  
**RESORTS POMPANO  
PHASE 1A ROADWAYS**

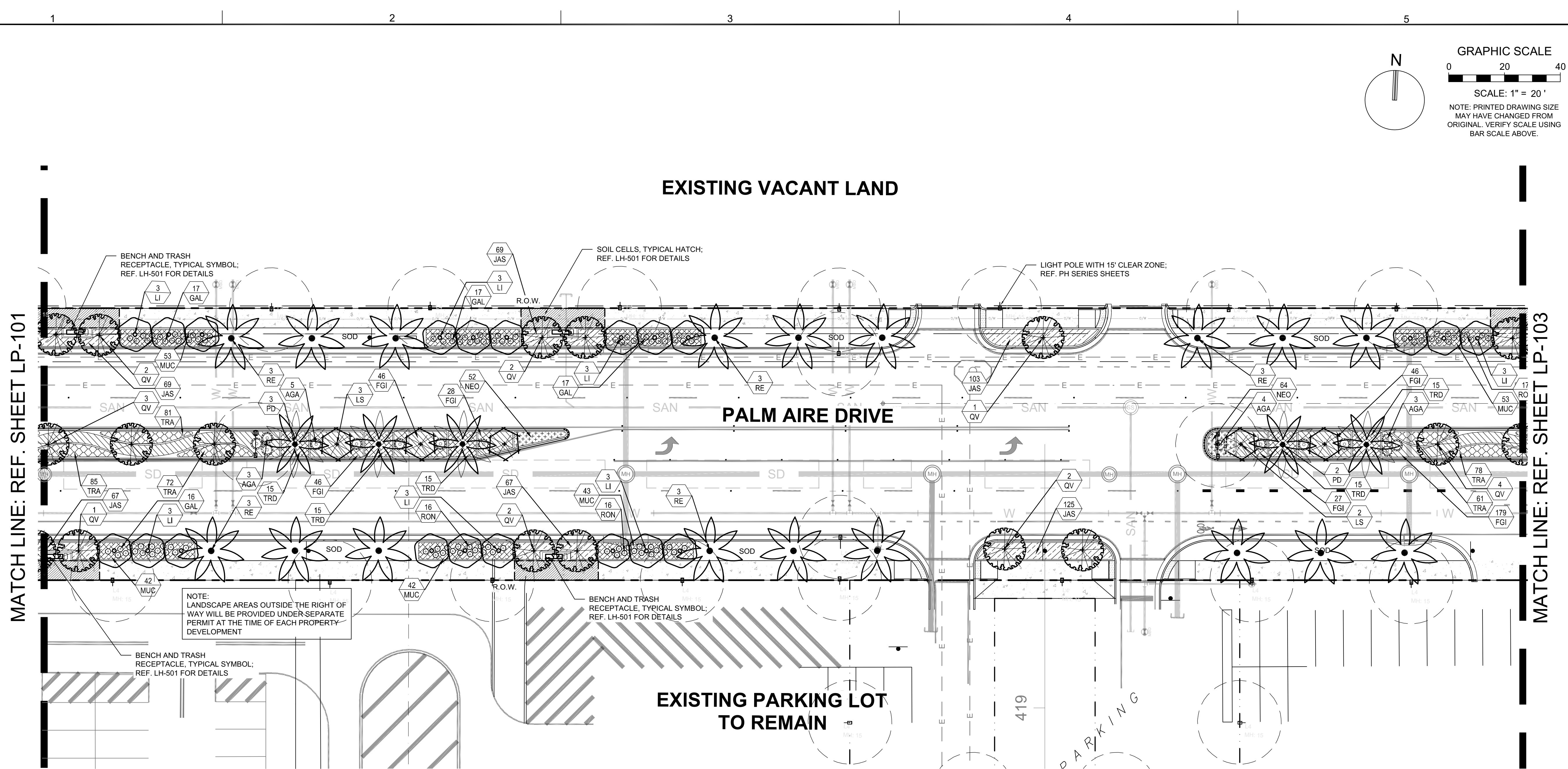
**SHEET TITLE**

# LANDSCAPE PLAN

**SHEET** LP-101  
**NUMBER**

PROJECT NUMBER	10230.09
-------------------	----------






PLANT SCHEDULE					
TREES	QTY	BOTANICAL / COMMON NAME	SIZE	NATIVE	REMARKS
LI	42	LAGERSTROEMIA INDICA 'NATCHEZ' CRAPE MYRTLE	10' HT X 5' SPRD., FULL CANOPY	**	MULTI-STEM, 4-5 STEMS @ 1" DBH
LS	12	LAGERSTROEMIA SPECIOSA QUEEN'S CRAPE MYRTLE	12' HT X 6' SPRD, 2" DBH, FULL CANOPY	**	STANDARD TREE FORM
QV	61	QUERCUS VIRGINIANA LIVE OAK	14' HT X 6' SPRD, 6" CT MIN, 3" DBH, FULL CANOPY	N**	
PALMS	QTY	BOTANICAL / COMMON NAME	SIZE	NATIVE	REMARKS
PD	18	PHOENIX DACTYLIFERA 'MEDJOOUL' DATE PALM	25' OA HT MIN, 12' CT, 18" DBH MIN, HEAVY	**	DIAMOND CUT, MATCHED, NOTARIZED CERTIFICATE OF VARIETY REQUIRED
PE3	15	PTYCHOSPERMA ELEGANS ALEXANDER PALM	8'-14' CT HTS; 14'-20' OA HTS, TRIPLE	**	STAGGERED HTS
RE	60	ROYSTONEA ELATA ROYAL PALM	10' GW, 28' OA HT, 18" DBH	N**	HEAVY, MATCHED
VM	5	VEITCHIA MONTGOMERYANA MONTGOMERY PALM	12', 16', 20' CT HTS; 20', 24', 28' OA HTS	*	STAGGERED HTS
SHRUBS	QTY	BOTANICAL / COMMON NAME	SIZE	NATIVE	REMARKS
AGA	54	AGAVE AMERICANA 'BLUE' CENTURY PLANT	2.5' HT X 3' SPRD, 10 GAL MIN	**	PLACED PER PLAN, HEAVY
GAL	100	GALPHIMIA GLAUCA THYRALIS	24" HT. X 24" SPRD.	**	PLACED PER PLAN, FULL TO BASE
RON	263	RONDELETIA LEUCOPHYLLA PANAMA ROSE	20" HT. X 20" SPRD.	**	PLACED PER PLAN, FULL TO BASE

SHRUB AREAS	QTY	BOTANICAL / COMMON NAME	SIZE	NATIVE	SPACING
ARA	277	ARACHIS GLABRATA PERENNIAL PEANUT	4" HT X 12" SPRD	*	12" OC
FGI	1,341	FICUS MIRCOCARPA 'GREEN ISLAND' GREEN ISLAND FICUS	12" HT X 16" SPRD	N**	18" O.C., FULL SHRUB
JAS	705	JASMINUM VOLUBILE WAX JASMINE	12" HT X 16" SPRD	*	18" O.C., FULL SHRUB
MUC	699	MUHLENBERGIA CAPILLARIS PINK MUHLY GRASS	24" HT X 20" SPRD	N**	24" OC
NEO	626	NEOREGELIA X 'SUPER FIREBALL' SUPER FIREBALL BROMELIAD	6" HT X 8" SPRD; 1 GAL	**	12" OC
PBM	730	PHILODENDRON X 'BURLE MARX' PHILODENDRON	16" HT X 16" SPRD	*	18" O.C., FULL SHRUB
TRA	1,244	TRADESCANTIA PALLIDA PURPLE QUEEN SPIDERWORT	10" HT X 16" SPRD	**	12" OC, FULL SHRUB
TRD	250	TRIPSACUM FLORIDANUM DWARF FAKAHATCHEE	24" HT X 24" SPRD	N**	30" OC, FULL SHRUB

**GRAPHIC SCALE**

0 20 40



SCALE: 1" = 20'

NOTE: PRINTED DRAWING SIZE  
MAY HAVE CHANGED FROM  
ORIGINAL. VERIFY SCALE USING  
BAR SCALE ABOVE.

 **KEITH**

**301 East Atlantic Blvd. Pompano  
Beach, FL 33060  
PH: (954) 788-3400**

---

**Florida Certificate of Authorization: 7928  
Licensed Business Number: 6860**

[illegible]

**PRELIMINARY PLAN**  
**NOT FOR CONSTRUCTION**  
THESE PLANS ARE NOT FULLY PERMITTED  
AND ARE SUBJECT TO REVISIONS MADE  
DURING THE PERMITTING PROCESS.  
RESPONSIBILITY FOR THE USE OF THESE  
PLANS PRIOR TO OBTAINING PERMITS FROM  
ALL AGENCIES HAVING JURISDICTION OVER  
THE PROJECT WILL FALL SOLELY UPON THE  
USER.

ISSUE DATE:	05/12/21
DESIGNED BY:	PW, MP, KS
DRAWN BY:	SL, BJ
CHECKED BY:	PW, MP, KS
BID-CONTRACT:	

**PAUL H. WEINBERG, R.L.A.**  
**FLORIDA REG. NO. LA6666804**  
**(FOR THE FIRM)**

**CLIENT**

**POMPANO PARK  
JV LAND HOLDINGS,  
LLC**

## PROJECT



**LIVE!**  
RESORTS POMPANO  
PHASE 1A ROADWAYS

**SHEET TITLE**

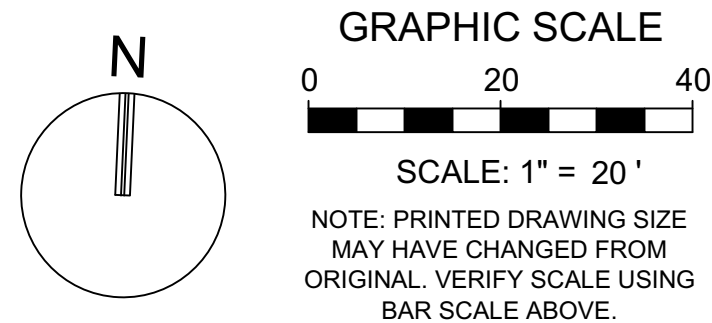
LANDSCAPE PLAN

SHEET  
NUMBER

---

PROJECT  
NUMBER





 **KEITH**

**301 East Atlantic Blvd. Pompano  
Beach, FL 33060  
PH: (954) 788-3400**

---

**Florida Certificate of Authorization: 7928  
Licensed Business Number: 6860**

[illegible]

**PRELIMINARY PLAN  
NOT FOR CONSTRUCTION**  
THESE PLANS ARE NOT FULLY PERMITTED  
AND ARE SUBJECT TO REVISIONS MADE  
DURING THE PERMITTING PROCESS.  
RESPONSIBILITY FOR THE USE OF THESE  
PLANS PRIOR TO OBTAINING PERMITS FROM  
ALL AGENCIES HAVING JURISDICTION OVER  
THE PROJECT WILL FALL SOLELY UPON THE  
USER.

ISSUE DATE:	05/12/21
DESIGNED BY:	PW, MP, KS
DRAWN BY:	SL, BJ
CHECKED BY:	PW, MP, KS
BID-CONTRACT:	

**PAUL H. WEINBERG, R.L.A.  
FLORIDA REG. NO. LA6666804  
(FOR THE FIRM)**

**CLIENT**

**POMPANO PARK  
JV LAND HOLDINGS,  
LLC**

PROJECT

**Live!**

**RESORTS POMPANO  
PHASE 1A ROADWAYS**

LANDSCAPE PLAN

SHEET  
NUMBER

LP-103

---

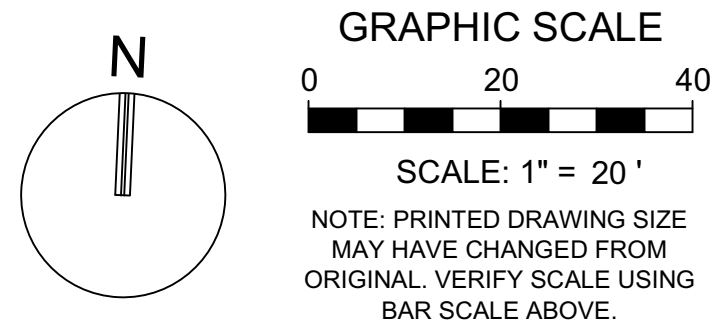
PROJECT  
NUMBER

10230.09

PLANT SCHEDULE					
TREES	QTY	BOTANICAL / COMMON NAME	SIZE	NATIVE	REMARKS
LI	42	LAGERSTROEMIA INDICA 'NATCHEZ' CRAPE MYRTLE	10' HT X 5' SPRD., FULL CANOPY	**	MULTI-STEM, 4-5 STEMS @ 1" DBH
LS	12	LAGERSTROEMIA SPECIOSA QUEEN'S CRAPE MYRTLE	12' HT X 6' SPRD, 2" DBH, FULL CANOPY	**	STANDARD TREE FORM
QV	61	QUERCUS VIRGINIANA LIVE OAK	14' HT X 6' SPRD, 6" CT MIN, 3" DBH, FULL CANOPY	N**	
PALMS	QTY	BOTANICAL / COMMON NAME	SIZE	NATIVE	REMARKS
PD	18	PHOENIX DACTYLIFERA 'MEDJOOL' DATE PALM	25' OA HT MIN, 12' CT, 18" DBH MIN, HEAVY	**	DIAMOND CUT, MATCHED, NOTARIZED CERTIFICATE OF VARIETY REQUIRED
PE3	15	PTYCHOSPERMA ELEGANS ALEXANDER PALM	8'-14' CT HTS; 14'-20' OA HTS, TRIPLE	**	STAGGERED HTS
RE	60	ROYSTONEA ELATA ROYAL PALM	10' GW, 28' OA HT, 18" DBH	N**	HEAVY, MATCHED
VM	5	VEITCHIA MONTGOMERYANA MONTGOMERY PALM	12', 16', 20' CT HTS; 20', 24', 28' OA HTS	*	STAGGERED HTS
SHRUBS	QTY	BOTANICAL / COMMON NAME	SIZE	NATIVE	REMARKS
AGA	54	AGAVE AMERICANA 'BLUE' CENTURY PLANT	2.5' HT X 3' SPRD, 10 GAL MIN	**	PLACED PER PLAN, HEAVY
GAL	100	GALPHIMIA LAUCA THRYALIS	24" HT. X 24" SPRD.	**	PLACED PER PLAN, FULL TO BASE
RON	263	RONDELETIA LEUCOPHYLLA PANAMA ROSE	20" HT. X 20" SPRD.	**	PLACED PER PLAN, FULL TO BASE

SHRUB AREAS	QTY	BOTANICAL / COMMON NAME	SIZE	NATIVE	SPACING
ARA	277	ARACHIS GLABRATA PERENNIAL PEANUT	4" HT X 12" SPRD	*	12" OC
FGI	1,341	FICUS MICROCARPA 'GREEN ISLAND' GREEN ISLAND FICUS	12" HT X 16" SPRD	N**	18" O.C., FULL SHRUB
JAS	705	JASMINUM VOLUBILE WAX JASMINE	12" HT X 16" SPRD	*	18" O.C., FULL SHRUB
MUC	699	MUHLENBERGIA CAPILLARIS PINK MUHLY GRASS	24" HT X 20" SPRD	N**	24" OC
NEO	626	NEOREGELIA X 'SUPER FIREBALL' SUPER FIREBALL BROMELIAD	6" HT X 8" SPRD; 1 GAL	**	12" OC
PBM	730	PHILODENDRON X 'BURLE MARX' PHILODENDRON	16" HT X 16" SPRD	*	18" O.C., FULL SHRUB
TRA	1,244	TRADESCANTIA PALLIDA PURPLE QUEEN SPIDERWORT	10" HT X 16" SPRD	**	12" OC, FULL SHRUB
TRD	250	TRIPSACUM FLORIDANUM DWARF FAKAHATCHEE	24" HT X 24" SPRD	N**	30" OC, FULL SHRUB





**Florida Certificate of Authorization: 7928**  
**Licensed Business Number: 6860**

[illegible]

**RESPONSIBILITY FOR THE USE OF THESE  
PLANS PRIOR TO OBTAINING PERMITS FROM  
ALL AGENCIES HAVING JURISDICTION OVER  
THE PROJECT WILL FALL SOLELY UPON THE  
USER.**

**BID-CONTRACT:** \_\_\_\_\_

**CLIENT**

**POMPANO PARK  
JV LAND HOLDINGS,  
LLC**

PROJECT



**LIVE!**  
RESORTS POMPANO  
PHASE 1A ROADWAYS

**SHEET TITLE**

LANDSCAPE PLAN

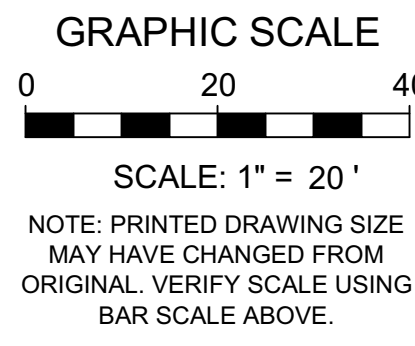
SHEET  
NUMBER

LP-104

PROJECT NUMBER	10230.09
----------------	----------

SHRUB AREAS	QTY	BOTANICAL / COMMON NAME	SIZE	NATIVE	SPACING
ARA	277	ARACHIS GLABRATA PERENNIAL PEANUT	4" HT X 12" SPRD	*	12" OC
FGI	1,341	FICUS MIRCOCARPA 'GREEN ISLAND' GREEN ISLAND FICUS	12" HT X 16" SPRD	N**	18" O.C., FULL SHRUB
JAS	705	JASMINUM VOLUBILE WAX JASMINE	12" HT X 16" SPRD	*	18" O.C., FULL SHRUB
MUC	699	MUHLENBERGIA CAPILLARIS PINK MUHLY GRASS	24" HT X 20" SPRD	N**	24" OC
NEO	626	NEOREGELIA X 'SUPER FIREBALL' SUPER FIREBALL BROMELIAD	6" HT X 8" SPRD; 1 GAL	**	12" OC
PBM	730	PHILODENDRON X 'BURLLE MARX' PHILODENDRON	16" HT X 16" SPRD	*	18" O.C., FULL SHRUB
TRA	1,244	TRADESCANTIA PALLIDA PURPLE QUEEN SPIDERWORT	10" HT X 16" SPRD	**	12" OC, FULL SHRUB
TRD	250	TRIPSACUM FLORIDANUM DWARF FAKAHATCHEE	24" HT X 24" SPRD	N**	30" OC, FULL SHRUB





PLANT SCHEDULE					
TREES	QTY	BOTANICAL / COMMON NAME	SIZE	NATIVE	REMARKS
LI	42	LAGERSTROEMIA INDICA 'NATCHEZ' CRAPE MYRTLE	10' HT X 5' SPRD., FULL CANOPY	**	MULTI-STEM, 4-5 STEMS @ 1" DBH
LS	12	LAGERSTROEMIA SPECIOSA QUEEN'S CRAPE MYRTLE	12' HT X 6' SPRD, 2" DBH, FULL CANOPY	**	STANDARD TREE FORM
QV	61	QUERCUS VIRGINIANA LIVE OAK	14' HT X 6' SPRD, 6" CT MIN, 3" DBH, FULL CANOPY	N**	
PALMS	QTY	BOTANICAL / COMMON NAME	SIZE	NATIVE	REMARKS
PD	18	PHOENIX DACTYLIFERA 'MEDJOOOL' DATE PALM	25' OA HT MIN, 12' CT, 18" DBH MIN, HEAVY	**	DIAMOND CUT, MATCHED, NOTARIZED CERTIFICATE OF VARIETY REQUIRED
PE3	15	PTYCHOSPERMA ELEGANS ALEXANDER PALM	8'-14' CT HTS: 14'-20' OA HTS, TRIPLE	**	STAGGERED HTS
RE	60	ROYSTONEA ELATA ROYAL PALM	10' GW, 28' OA HT, 18" DBH	N**	HEAVY, MATCHED
VM	5	VEITCHIA MONTGOMERYANA MONTGOMERY PALM	12', 16', 20' CT HTS; 20', 24', 28' OA HTS	*	STAGGERED HTS
SHRUBS	QTY	BOTANICAL / COMMON NAME	SIZE	NATIVE	REMARKS
AGA	54	AGAVE AMERICANA 'BLUE' CENTURY PLANT	2.5' HT X 3' SPRD, 10 GAL MIN	**	PLACED PER PLAN, HEAVY
GAL	100	GALPHIMIA GLAUCA THYRALIS	24" HT. X 24" SPRD.	**	PLACED PER PLAN, FULL TO BASE
RON	263	RONDELETIA LEUCOPHYLLA PANAMA ROSE	20" HT. X 20" SPRD.	**	PLACED PER PLAN, FULL TO BASE
SHRUB AREAS	QTY	BOTANICAL / COMMON NAME	SIZE	NATIVE	SPACING
ARA	277	ARACHIS GLABRATA PERENNIAL PEANUT	4" HT X 12" SPRD	*	12" OC
FGI	1,341	FICUS MIRCOCARPA 'GREEN ISLAND' GREEN ISLAND FICUS	12" HT X 16" SPRD	N**	18" O.C., FULL SHRUB
JAS	705	JASMINUM VOLUBILE WAX JASMINE	12" HT X 16" SPRD	*	18" O.C., FULL SHRUB
MUC	699	MUHLENBERGIA CAPILLARIS PINK MUHLY GRASS	24" HT X 20" SPRD	N**	24" OC
NEO	626	NEOREGELIA X 'SUPER FIREBALL' SUPER FIREBALL BROMELIAD	6" HT X 8" SPRD; 1 GAL	**	12" OC
PBM	730	PHILODENDRON X 'BURLE MARX' PHILODENDRON	16" HT X 16" SPRD	*	18" O.C., FULL SHRUB
TRA	1,244	TRADESCANTIA PALLIDA PURPLE QUEEN SPIDERWORT	10" HT X 16" SPRD	**	12" OC, FULL SHRUB
TRD	250	TRIPSACUM FLORIDANUM DWARF FAKAHATCHEE	24" HT X 24" SPRD	N**	30" OC, FULL SHRUB

Drawing name: Q:\10230.09 - LIVE Pompano - Cordish Master Development\Landscape Architecture\CAD-Phase 1A\10230.09-LP-1XX.dwg



[illegible]

**PRELIMINARY PLAN**  
**NOT FOR CONSTRUCTION**

**THESE PLANS ARE NOT FULLY PERMITTED  
AND ARE SUBJECT TO REVISIONS MADE  
DURING THE PERMITTING PROCESS.**

**RESPONSIBILITY FOR THE USE OF THESE  
PLANS PRIOR TO OBTAINING PERMITS FROM  
ALL AGENCIES HAVING JURISDICTION OVER  
THE PROJECT WILL FALL SOLELY UPON THE  
USER.**

ISSUE DATE: 05/12/21

DESIGNED BY: PW, MP, KS

DRAWN BY: SL, BJ

CHECKED BY: PW, MP, KS

BID-CONTRACT:

PAUL H. WEINBERG, R.L.A.  
FLORIDA REG. NO. LA6666804  
(FOR THE FIRM)

**CLIENT**

**POMPANO PARK  
JV LAND HOLDINGS,  
LLC**

PROJECT

**Live!**

## RESORTS POMPANO PHASE 1A ROADWAYS

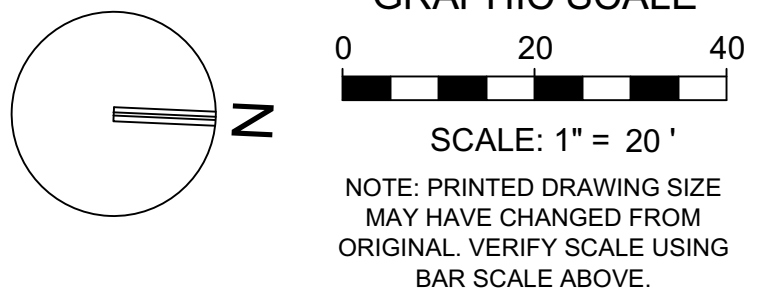
SHEET TITLE

LANDSCAPE PLAN

SHEET  
NUMBER

LP-106

PROJECT NUMBER	10230.09
----------------	----------



## EXISTING VACANT LAND

NOTE:  
LANDSCAPE AREAS OUTSIDE THE RIGHT OF  
WAY WILL BE PROVIDED UNDER SEPARATE  
PERMIT AT THE TIME OF EACH PROPERTY  
DEVELOPMENT

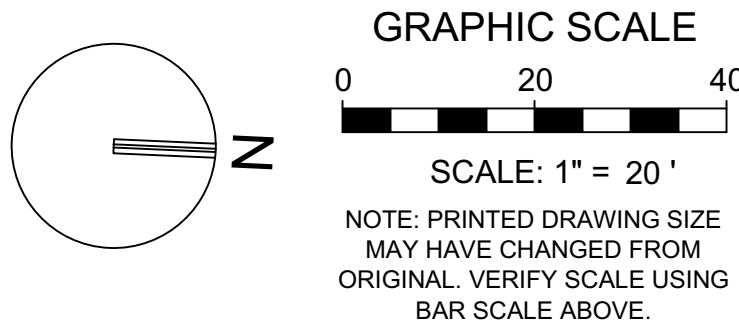
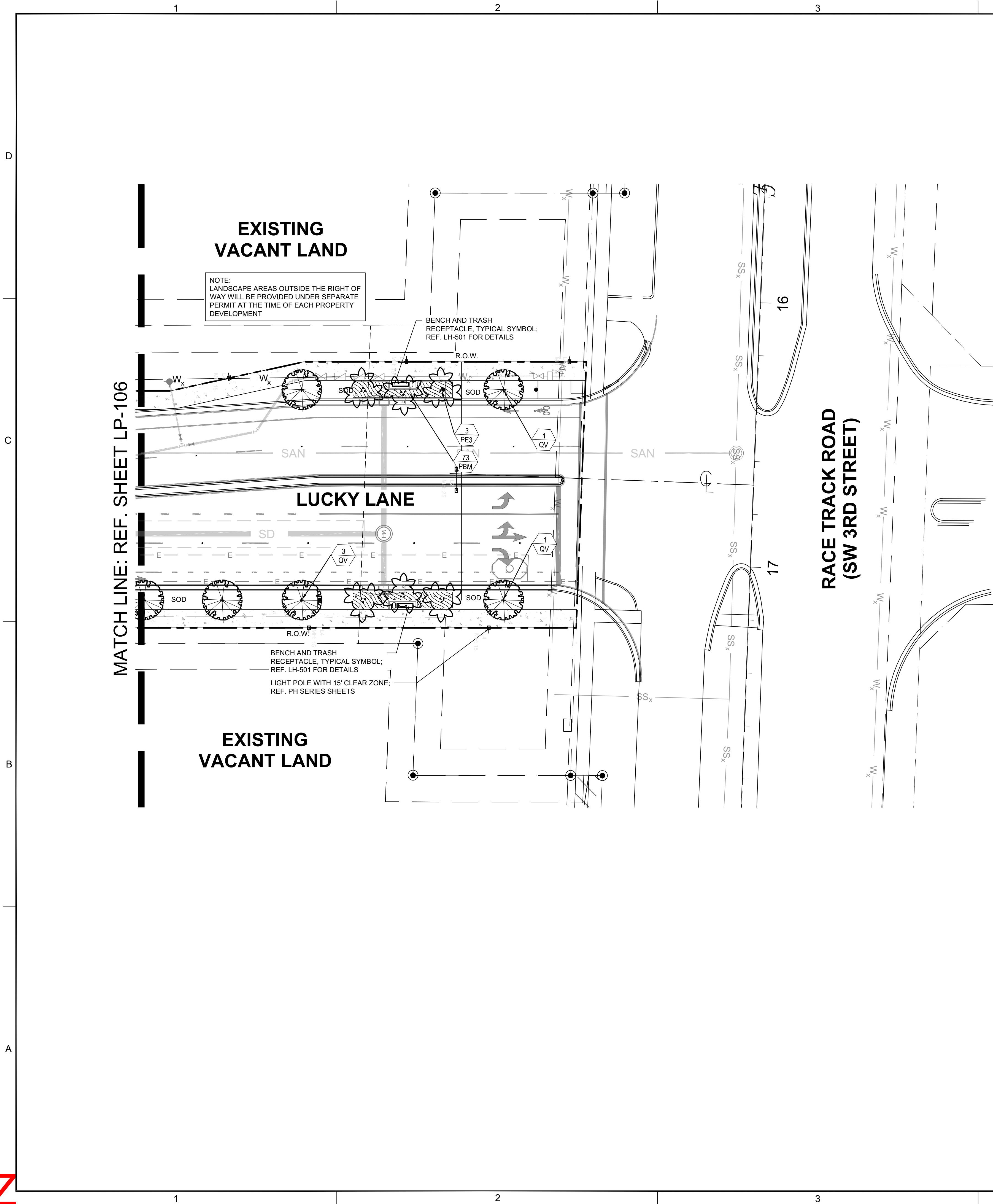
# LUCKY LANE

## EXISTING VACANT LAND

PLANT SCHEDULE					
TREES	QTY	BOTANICAL / COMMON NAME	SIZE	NATIVE	REMARKS
LI	42	LAGERSTROEMIA INDICA 'NATCHEZ' CRAPE MYRTLE	10' HT X 5' SPRD., FULL CANOPY	**	MULTI-STEM, 4-5 STEMS @ 1" DBH
LS	12	LAGERSTROEMIA SPECIOSA QUEEN'S CRAPE MYRTLE	12' HT X 6' SPRD, 2" DBH, FULL CANOPY	**	STANDARD TREE FORM
QV	61	QUERCUS VIRGINIANA LIVE OAK	14' HT X 6' SPRD, 6" CT MIN, 3" DBH, FULL CANOPY	N**	
PALMS	QTY	BOTANICAL / COMMON NAME	SIZE	NATIVE	REMARKS
PD	18	PHOENIX DACTYLIFERA 'MEDJOL' DATE PALM	25' OA HT MIN, 12" CT, 18" DBH MIN, HEAVY	**	DIAMOND CUT, MATCHED, NOTARIZED CERTIFICATE OF VARIETY REQUIRED
PE3	15	PTYCHOSPERMA ELEGANS ALEXANDER PALM	8'-14" CT HTS; 14'-20" OA HTS, TRIPLE	**	STAGGERED HTS
RE	60	ROYSTONEA ELATA ROYAL PALM	10' GW, 28' OA HT, 18" DBH	N**	HEAVY, MATCHED
VM	5	VEITCHIA MONTGOMERYANA MONTGOMERY PALM	12', 16', 20' CT HTS; 20', 24', 28' OA HTS	*	STAGGERED HTS
SHRUBS	QTY	BOTANICAL / COMMON NAME	SIZE	NATIVE	REMARKS
AGA	54	AGAVE AMERICANA 'BLUE' CENTURY PLANT	2.5' HT X 3' SPRD, 10 GAL MIN	**	PLACED PER PLAN, HEAVY
GAL	100	GALPHIMIA GLAUCA THYRALIS	24" HT. X 24" SPRD.	**	PLACED PER PLAN, FULL TO BASE
RON	263	RONDELETIA LEUCOPHYLLA PANAMA ROSE	20" HT. X 20" SPRD.	**	PLACED PER PLAN, FULL TO BASE

SHRUB AREAS	QTY	BOTANICAL / COMMON NAME	SIZE	NATIVE	SPACING
ARA	277	ARACHIS GLABRATA PERENNIAL PEANUT	4" HT X 12" SPRD	*	12" OC
FGI	1,341	FICUS MICROCARPA 'GREEN ISLAND' GREEN ISLAND FICUS	12" HT X 16" SPRD	N**	18" O.C., FULL SHRUB
JAS	705	JASMINUM VOLUBILE WAX JASMINE	12" HT X 16" SPRD	*	18" O.C., FULL SHRUB
MUC	699	MUHLENBERGIA CAPILLARIS PINK MUHLY GRASS	24" HT X 20" SPRD	N**	24" OC
NEO	626	NEOREGELIA X 'SUPER FIREBALL' SUPER FIREBALL BROMELIAD	6" HT X 8" SPRD; 1 GAL	**	12" OC
PBM	730	PHILODENDRON X 'BURLE MARX' PHILODENDRON	16" HT X 16" SPRD	*	18" O.C., FULL SHRUB
TRA	1,244	TRADESCANTIA PALLIDA PURPLE QUEEN SPIDERWORT	10" HT X 16" SPRD	**	12" OC, FULL SHRUB
TRD	250	TRIPSACUM FLORIDANUM DWARF FAKAHATCHEE	24" HT X 24" SPRD	N**	30" OC, FULL SHRUB







301 East Atlantic Blvd. Pompano Beach, FL 33060  
PH: (954) 788-3400

Florida Certificate of Authorization: 7928  
Licensed Business Number: 6860

REVISIONS		
NO.	DESCRIPTION	DATE

**PRELIMINARY PLAN  
NOT FOR CONSTRUCTION**  
THESE PLANS ARE NOT FULLY PERMITTED  
AND ARE SUBJECT TO REVISIONS MADE  
DURING THE PERMITTING PROCESS.  
RESPONSIBILITY FOR THE USE OF THESE  
PLANS PRIOR TO OBTAINING PERMITS FROM  
ALL AGENCIES HAVING JURISDICTION OVER  
THE PROJECT WILL FALL SOLELY UPON THE  
USER.

ISSUE DATE: 05/12/21  
DESIGNED BY: PW, MP, KS  
DRAWN BY: SL, BJ  
CHECKED BY: PW, MP, KS  
BID-CONTRACT:

PAUL H. WEINBERG, R.L.A.  
FLORIDA REG. NO. LA6666804  
(FOR THE FIRM)

CLIENT

POMPANO PARK  
JV LAND HOLDINGS,  
LLC

PROJECT

  
RESORTS POMPANO  
PHASE 1A ROADWAYS

SHEET TITLE

LANDSCAPE PLAN

SHEET NUMBER

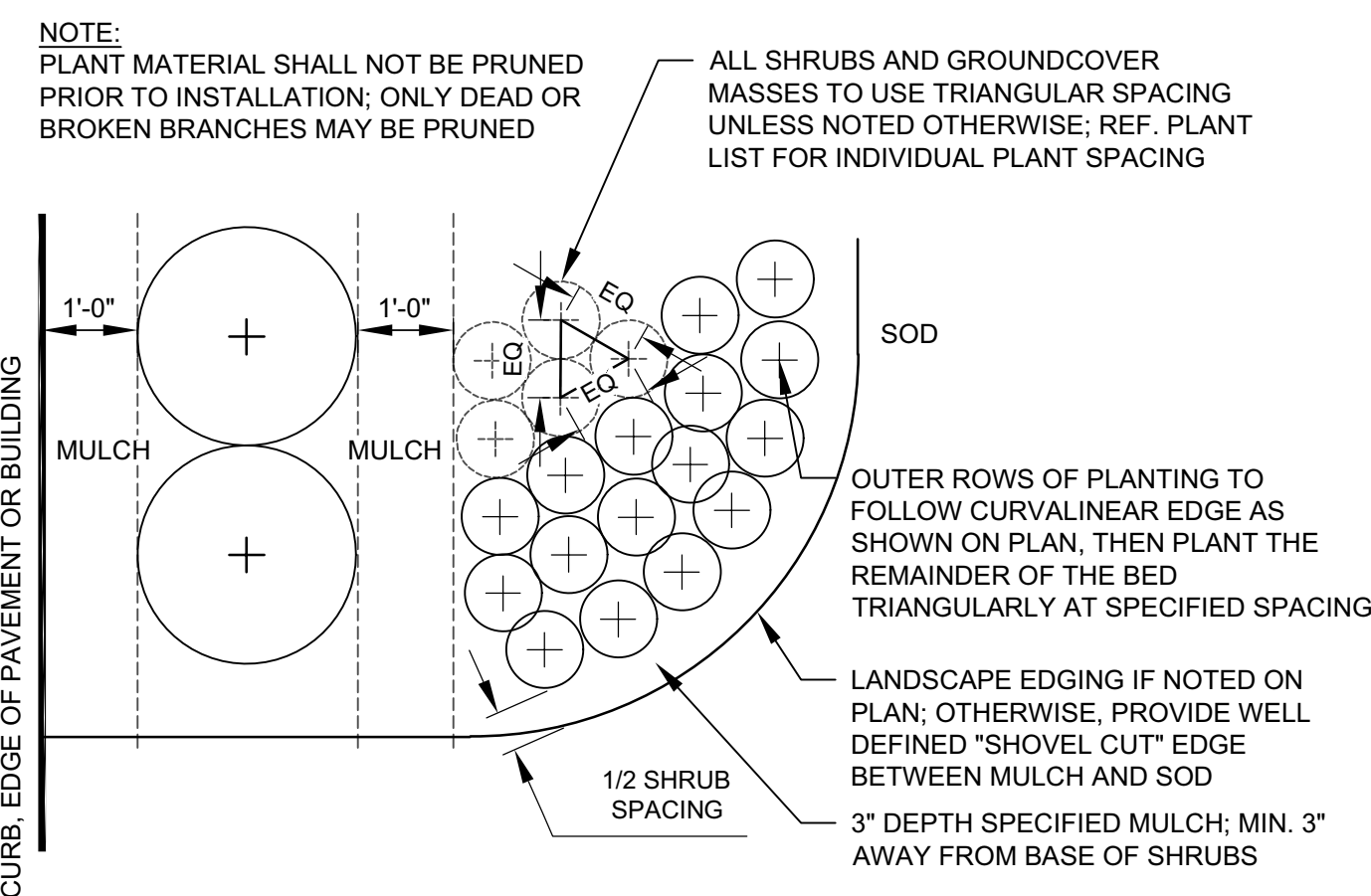
LP-107

PROJECT NUMBER

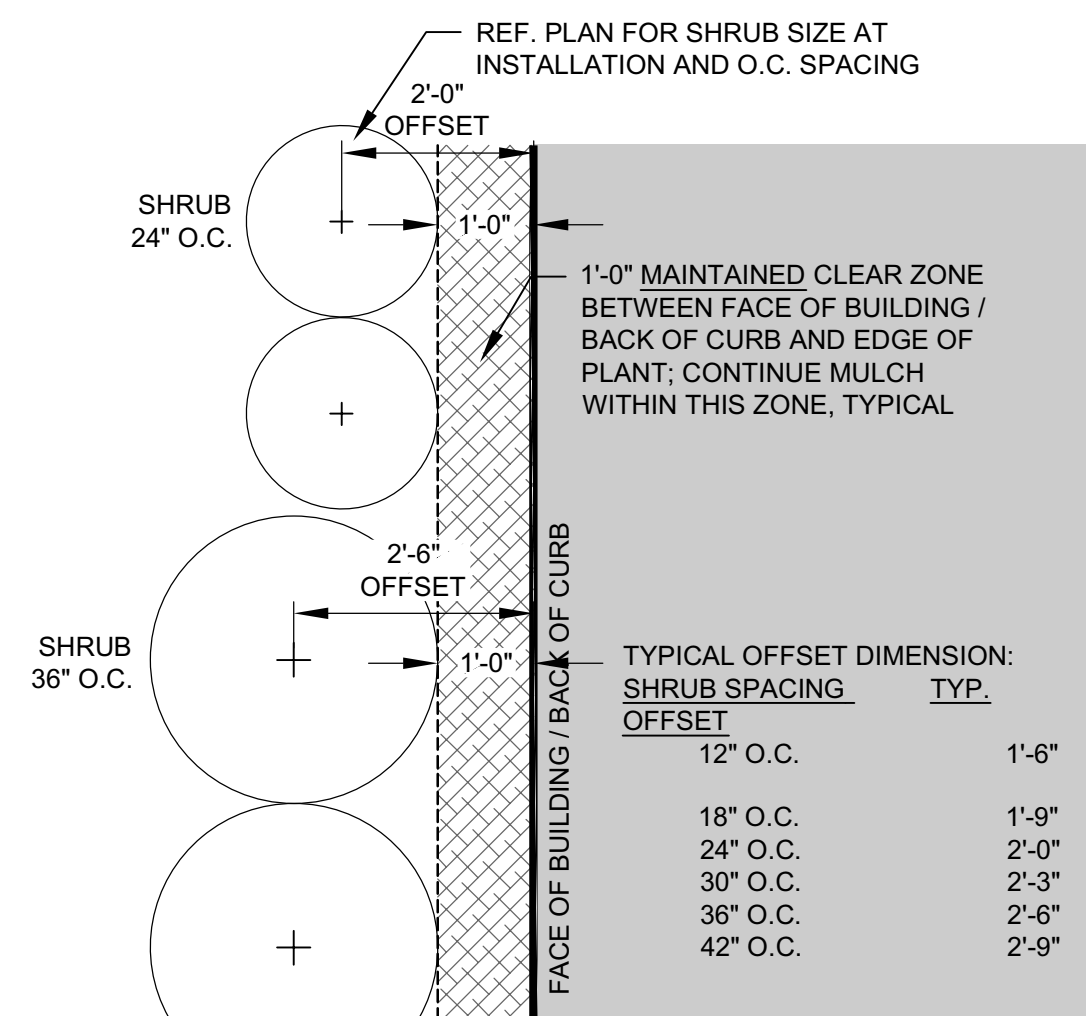
10230.09



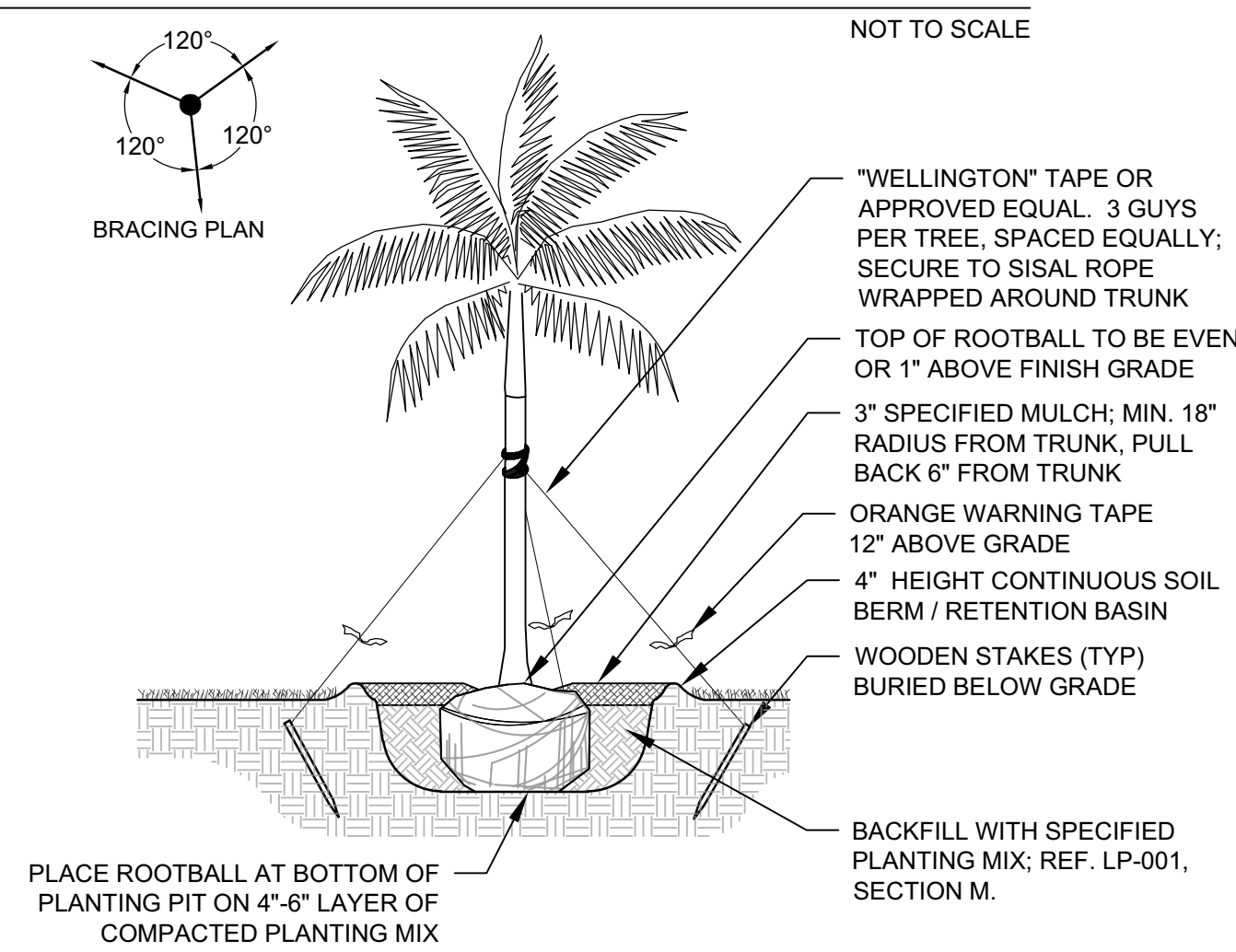
10	PLAN/SECTION
----	--------------



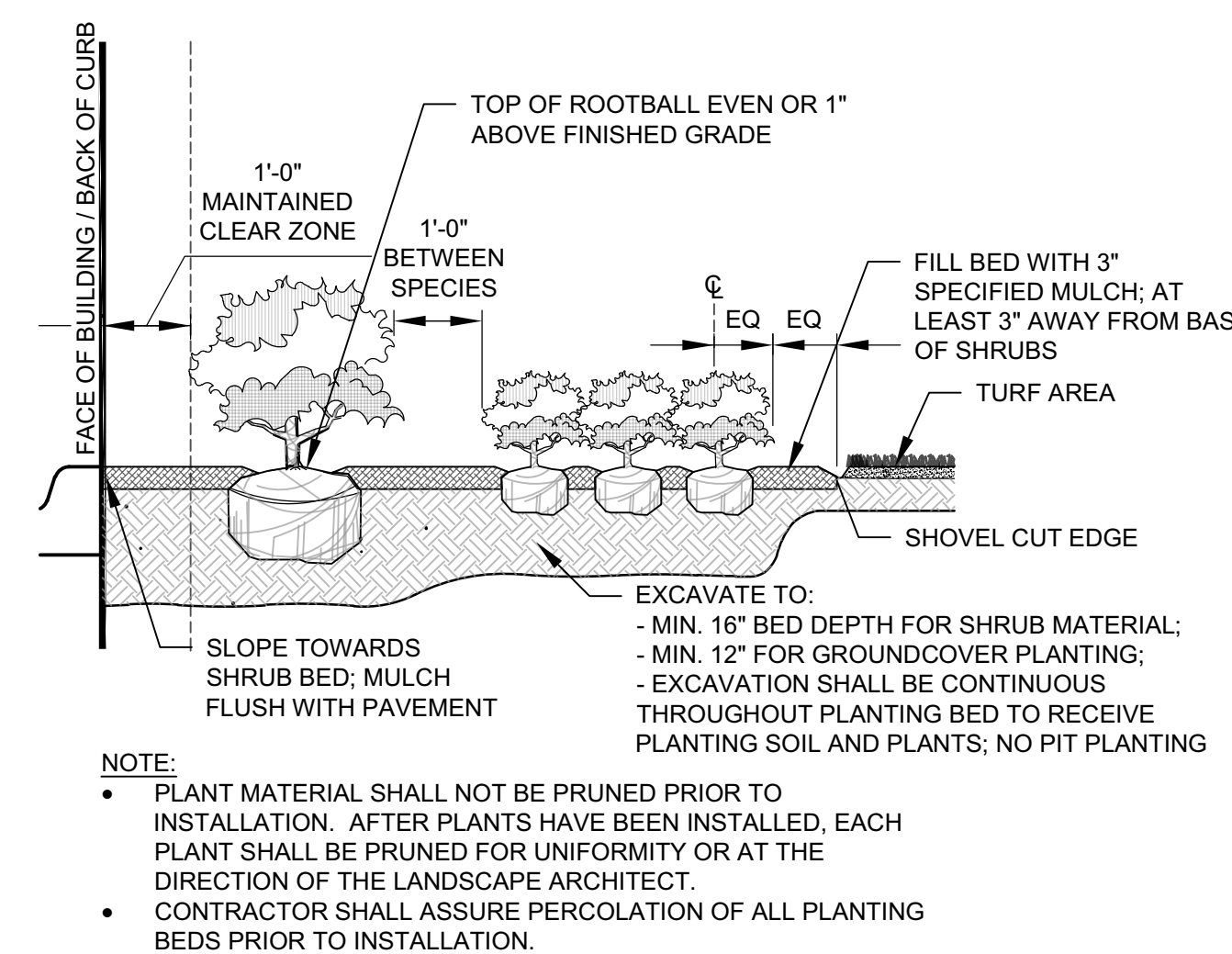
08 PLAN NOT TO SCALE



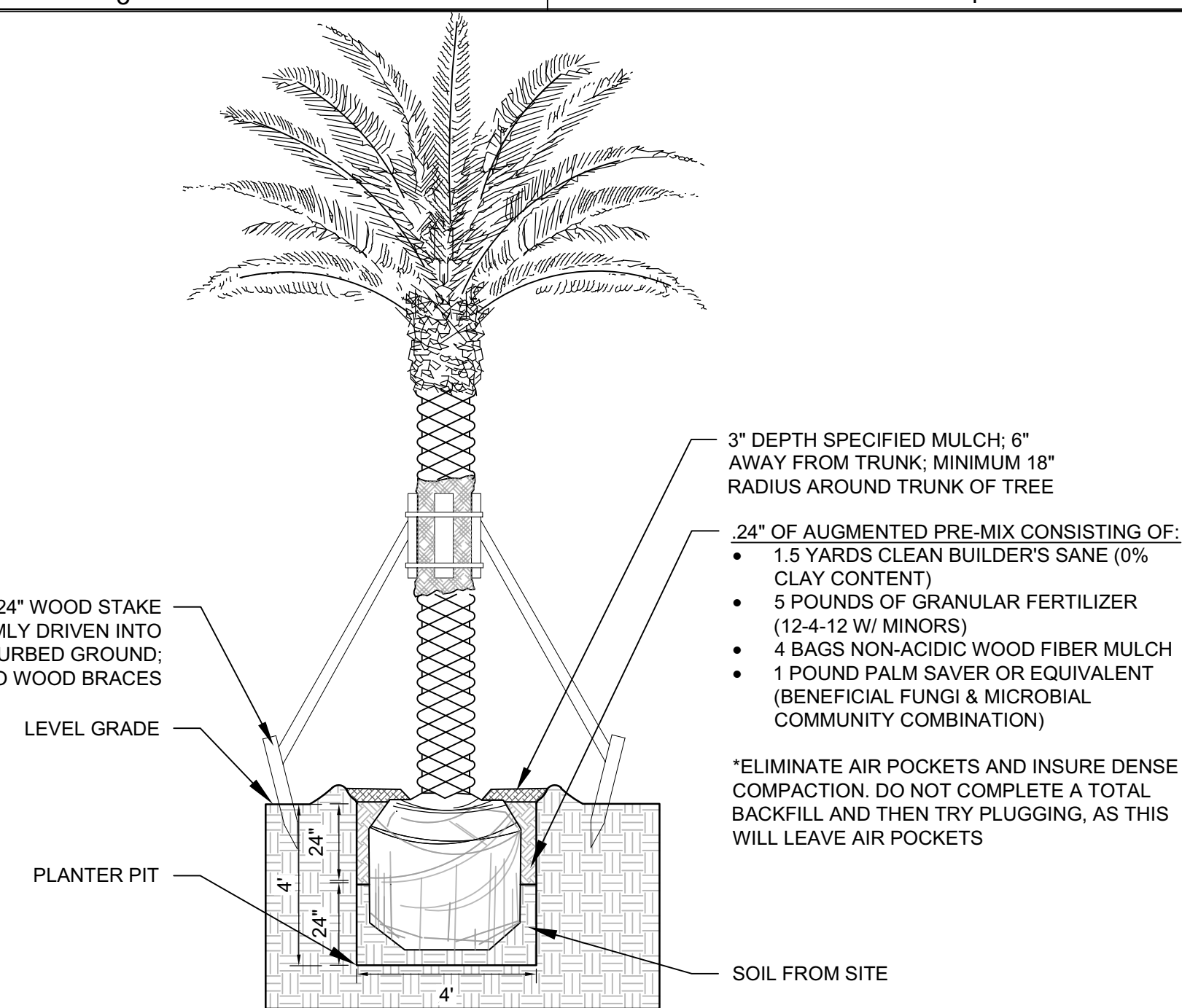
04 PLAN NOT TO SCALE



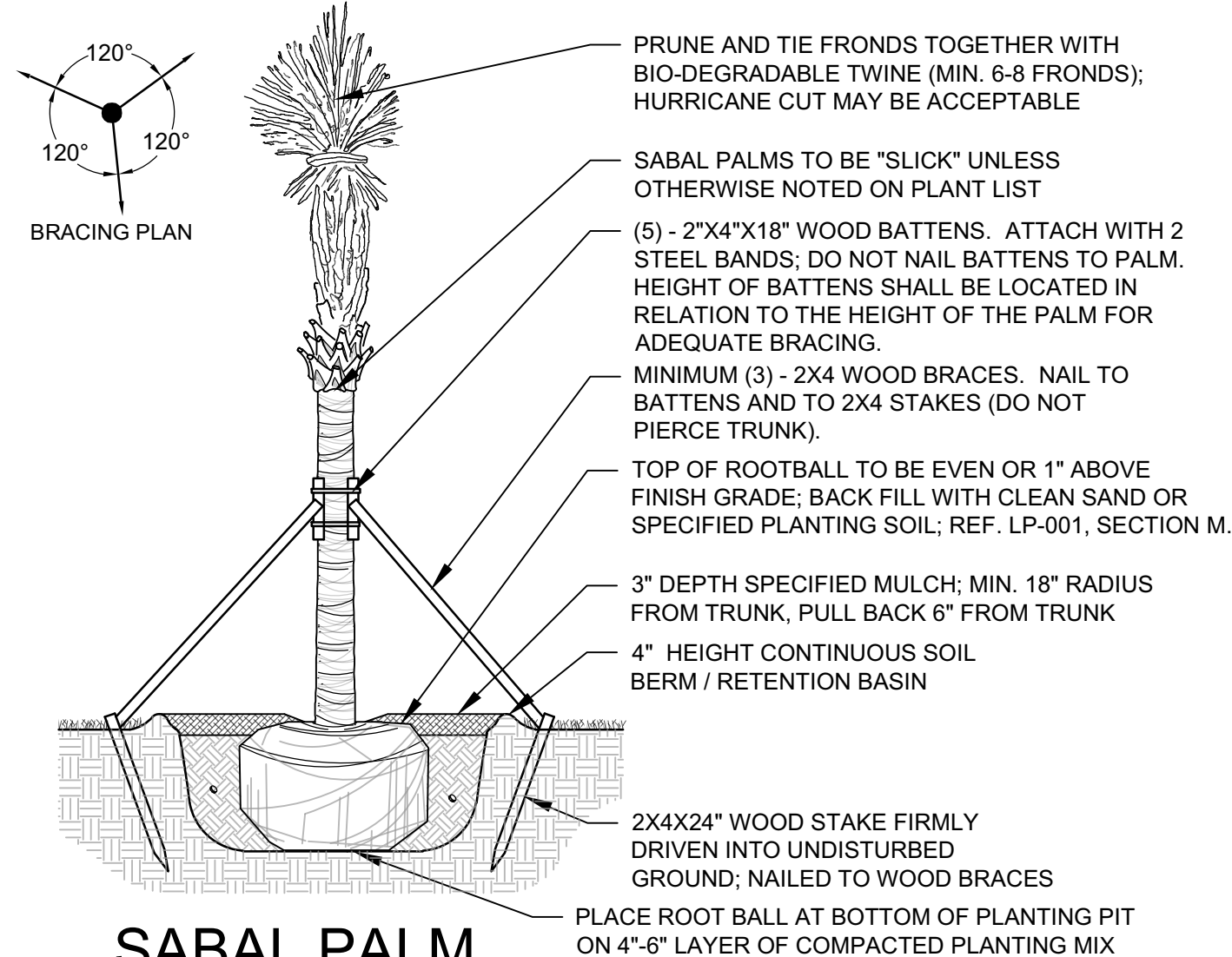
07	SECTION	NOT TO SCALE
----	---------	--------------



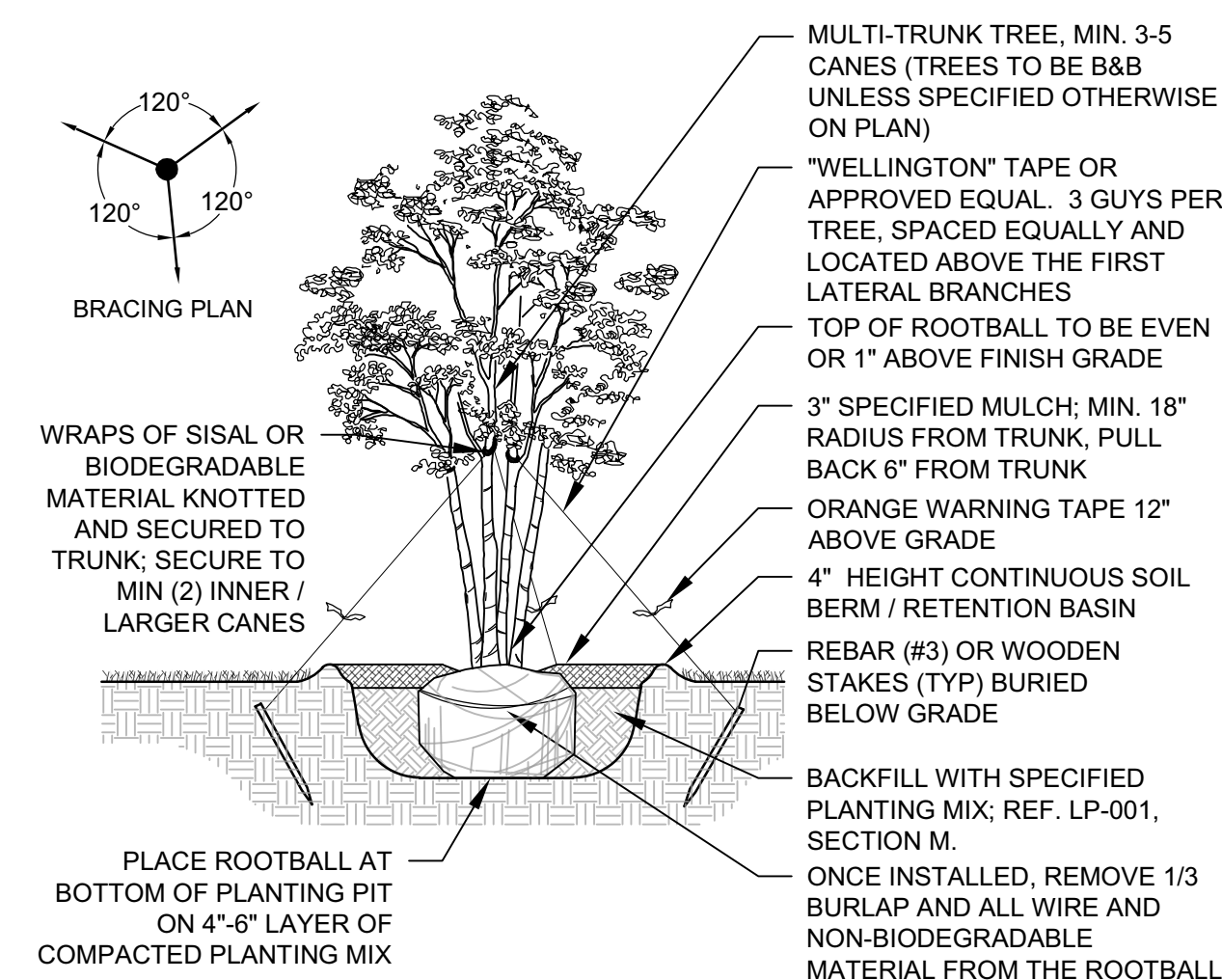
03 SECTION NOT TO SCALE



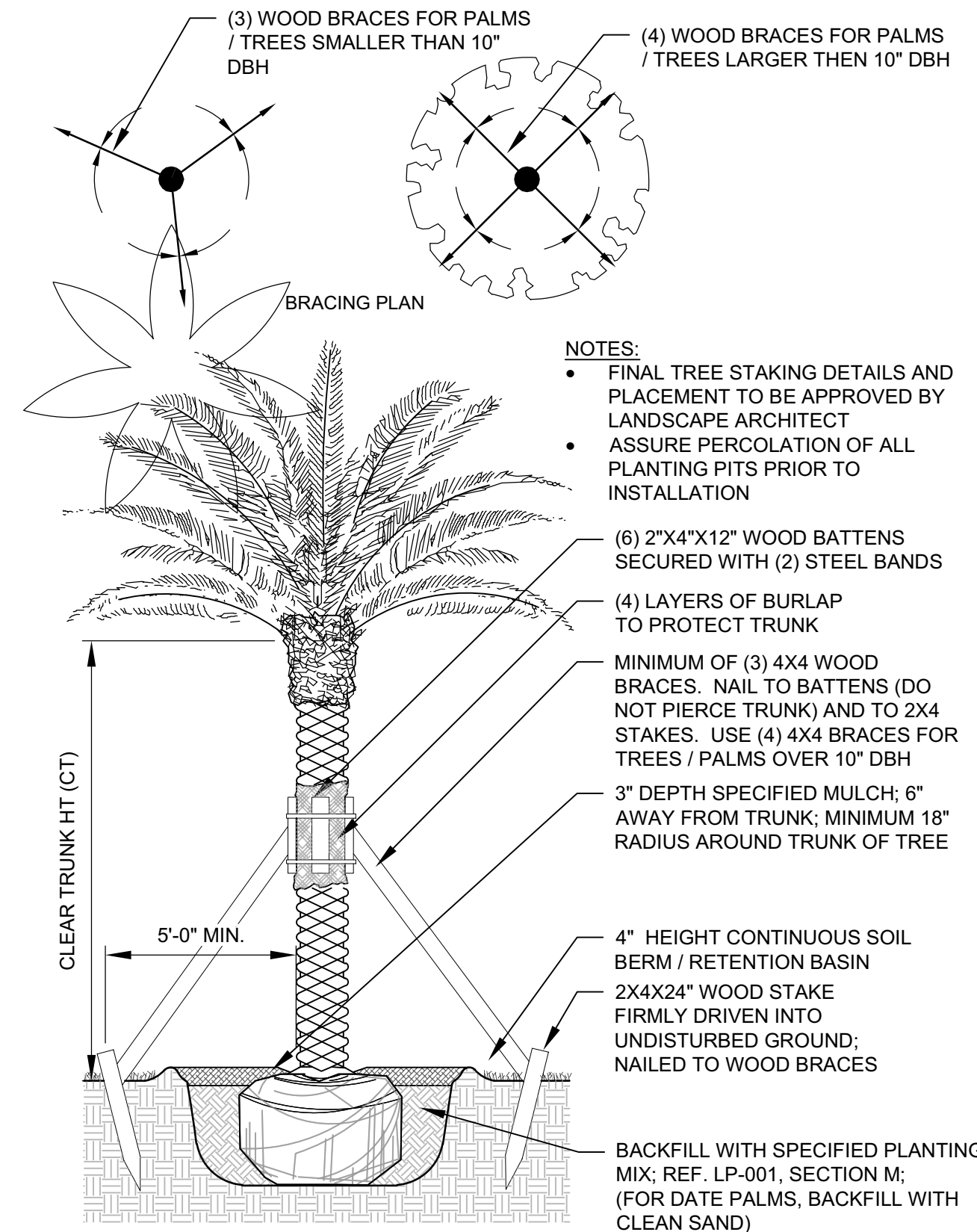
09 SECTION NOT TO SCALE



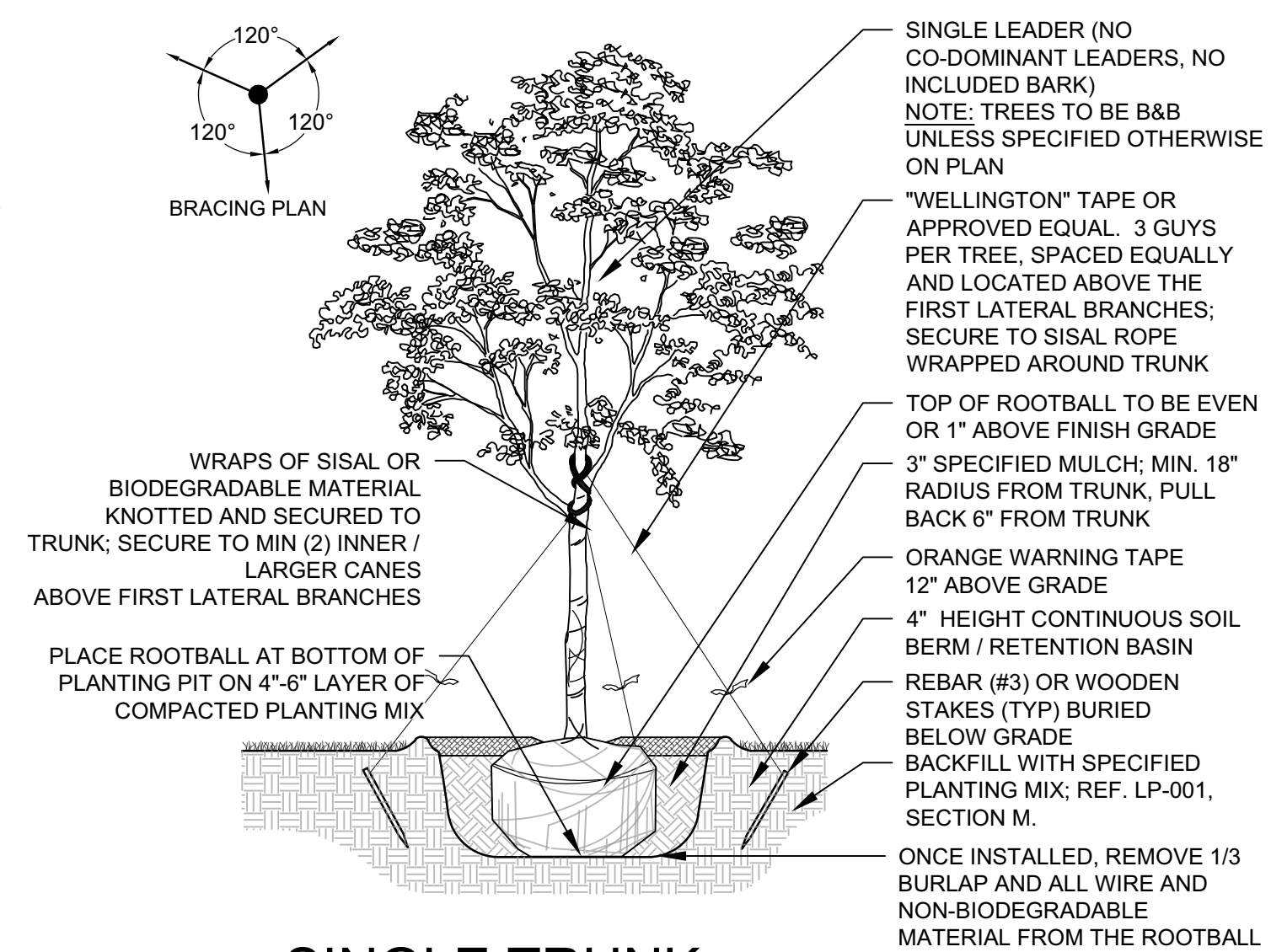
06 SECTION NOT TO SCALE



02 SECTION NOT TO SCALE



05	SECTION	NOT TO SCALE
----	---------	--------------



SECTION \_\_\_\_\_ NOT TO SCALE

**NOTE:**

- REF. LP-001, LANDSCAPE NOTES, FOR ADDITIONAL REQUIREMENTS.
- ROOT BALL SIZE FOR ALL TREES AND PALMS TO BE IN PROPORTION TO SIZE AND TYPE OF PALM PER FLORIDA GRADES AND STANDARDS FOR NURSERY PLANTS.



**301 East Atlantic Blvd. Pompano  
Beach, FL 33060  
PH: (954) 788-3400**

---

**Florida Certificate of Authorization: 7928  
Licensed Business Number: 6860**

[illegible]

**PRELIMINARY PLAN**  
**NOT FOR CONSTRUCTION**  
THESE PLANS ARE NOT FULLY PERMITTED  
AND ARE SUBJECT TO REVISIONS MADE  
DURING THE PERMITTING PROCESS.  
RESPONSIBILITY FOR THE USE OF THESE  
PLANS PRIOR TO OBTAINING PERMITS FROM  
ALL AGENCIES HAVING JURISDICTION OVER  
THE PROJECT WILL FALL SOLELY UPON THE  
USER.

ISSUE DATE:	05/12/21
DESIGNED BY:	PW, MP, KS
DRAWN BY:	SL, BJ
CHECKED BY:	PW, MP, KS
BID-CONTRACT:	

**PAUL H. WEINBERG, R.L.A.**  
**FLORIDA REG. NO. LA6666804**  
**(FOR THE FIRM)**

## CLIENT

**POMPANO PARK  
JV LAND HOLDINGS,  
LLC**

PROJECT

**Live!**  
**RESORTS POMPANO  
PHASE 1A ROADWAYS**

SHEET TITLE

LANDSCAPE DETAILS

SHEET NUMBER LP-501

PROJECT NUMBER	10230.09
----------------	----------